



|                 |   |                 |
|-----------------|---|-----------------|
| <br><b>EOS2</b> | <h2 style="margin: 0;">SAFETY LIGHT CURTAIN RESISTENT TO HIGH VIBRATIONS</h2> <p style="font-size: 0.9em; margin: 5px 0;">To guarantee a correct and safe installation and operation of the light curtain, it is MANDATORY to consult the user manual available at the REER <a href="https://www.reersafety.com">https://www.reersafety.com</a></p> | <br><b>EOS4</b> |
|-----------------|---|-----------------|

| TECHNICAL CHARACTERISTICS SAFETY LIGHT CURTAIN EOS AT/ATL/XT/XTL |  |                       |
|--|--|-----------------------|
| Resolutions (mm)   | 30   |                       |
| Protected height (mm)  | <b>ATL / XTL MODELS</b>  | <b>AT / XT MODELS</b> |
|  | 160 ... 1810   | 160 ... 1810          |
| Max working range (m)  | 6  | 12                    |
| Safety outputs   | 2 PNP – 400mA @ 24VDC  |                       |
| Response time EOS2 (ms)  | 4,5 ... 22,5 (see models tables)   |                       |
| Response time EOS4 (ms)  | 4 ... 22 (see models tables)   |                       |
| Power supply (Vcc)   | 24 ± 20%   |                       |
| Connections  | Connectors M12 (5 poles > Emitter / 5 poles > Receiver "A" / 8 poles > Receiver "X") |                       |
| Operating temperature (°C)                                       | -30 ... 55°C   |                       |
| Grado di protezione *  | IP 65 - IP 67  |                       |
| Section dimensions (mm)  | 28 x 30  |                       |
| Max. consumption (W)   | 1 (Emitter)  | 2 (Receiver)          |
| Light curtain lifetime   | 20 years   |                       |

|  | EOS2         |              | EOS4   |              |  |
|--|--------------|--------------|--|--------------|--|
|  | Safety level | Type 2       | EN 61496-1:2013<br>IEC 61496-2:2013  | Type 4       | EN 61496-1:2013<br>IEC 61496-2:2013  |
|  |              | SIL 1        | IEC 61508-1: (ed.2)<br>IEC 61508-2: (ed.2)<br>IEC 61508-3: (ed.2)<br>IEC 61508-4: (ed.2) | SIL 3        | IEC 61508-1: (ed.2)<br>IEC 61508-2: (ed.2)<br>IEC 61508-3: (ed.2)<br>IEC 61508-4: (ed.2) |
|  |              | SILCL 1      | IEC 62061:2005/A2:2015   | SILCL 3      | IEC 62061:2005/A2:2015   |
|  |              | PL c - Cat.2 | EN ISO 13849-1:2015  | PL e - Cat.4 | EN ISO 13849-1:2015  |

\* Devices are not suitable for outdoor use without supplementary measures.

| Models EOS2 AT/ATL/XT/XTL   | 153      | 253      | 303      | 453      | 603      | 753      | 903      | 1053     | 1203     | 1353     | 1503     | 1653     | 1803     |
|-----------------------------|----------|----------|----------|----------|----------|----------|----------|----------|----------|----------|----------|----------|----------|
| Number of beams             | 8        | 13       | 16       | 23       | 31       | 38       | 46       | 53       | 61       | 68       | 76       | 83       | 91       |
| Response time               | 4,5      | 5,5      | 6        | 8        | 10       | 11       | 13       | 14,5     | 16       | 17,5     | 19,5     | 21       | 22,5     |
| Protected area (mm)         | 160      | 260      | 310      | 460      | 610      | 760      | 910      | 1060     | 1210     | 1360     | 1510     | 1660     | 1810     |
| Overall barrier height (mm) | 213      | 313      | 363      | 513      | 663      | 813      | 963      | 1113     | 1263     | 1413     | 1563     | 1713     | 1863     |
| PFHd (IEC 61508)            | 2,05E-08 | 2,56E-08 | 2,67E-08 | 3,31E-08 | 3,93E-08 | 4,58E-08 | 5,19E-08 | 5,84E-08 | 6,46E-08 | 7,10E-08 | 7,72E-08 | 8,37E-08 | 8,98E-08 |
| Dcavg (ISO 13849-1)         | 91,3%    | 91,1%    | 91,0%    | 90,9%    | 90,7%    | 90,6%    | 90,6%    | 90,5%    | 90,5%    | 90,4%    | 90,4%    | 90,4%    | 90,3%    |
| MTTFd (ISO 13849-1) (years) | 485,1    | 399,1    | 384,3    | 315,6    | 269,6    | 233,9    | 207,6    | 185,8    | 168,8    | 154,1    | 142,3    | 131,7    | 122,9    |
| CCF (ISO 13849-1)           | 80%      |          |          |          |          |          |          |          |          |          |          |          |          |

| Models EOS4 AT/ATL/XT/XTL   | 153      | 253      | 303      | 453      | 603      | 753      | 903      | 1053     | 1203     | 1353     | 1503     | 1653     | 1803     |
|-----------------------------|----------|----------|----------|----------|----------|----------|----------|----------|----------|----------|----------|----------|----------|
| Number of beams             | 8        | 13       | 16       | 23       | 31       | 38       | 46       | 53       | 61       | 68       | 76       | 83       | 91       |
| Response time               | 4        | 5        | 5,5      | 7,5      | 9        | 10,5     | 12,5     | 14       | 15,5     | 17       | 19       | 20,5     | 22       |
| Protected area (mm)         | 160      | 260      | 310      | 460      | 610      | 760      | 910      | 1060     | 1210     | 1360     | 1510     | 1660     | 1810     |
| Overall barrier height (mm) | 213      | 313      | 363      | 513      | 663      | 813      | 963      | 1113     | 1263     | 1413     | 1563     | 1713     | 1863     |
| PFHd (IEC 61508)            | 8,39E-09 | 9,37E-09 | 9,52E-09 | 1,08E-08 | 1,19E-08 | 1,32E-08 | 1,43E-08 | 1,56E-08 | 1,67E-08 | 1,80E-08 | 1,91E-08 | 2,04E-08 | 2,15E-08 |
| Dcavg (ISO 13849-1)         | 96,7%    | 96,9%    | 97,0%    | 97,2%    | 97,3%    | 97,4%    | 97,5%    | 97,6%    | 97,6%    | 97,7%    | 97,7%    | 97,7%    | 97,8%    |
| MTTFd (ISO 13849-1) (years) | 516,1    | 419,9    | 403,5    | 328,5    | 278,9    | 240,9    | 213,1    | 190,2    | 172,5    | 157,1    | 144,8    | 133,8    | 124,8    |
| CCF (ISO 13849-1)           | 80%      |          |          |          |          |          |          |          |          |          |          |          |          |

**SAV 8E / SAV 12E vibration-damping supports - application sheet**

The purpose of this application sheet is to illustrate the correct use of vibration-damping supports used on **EOS** series barriers undergoing severe vibrations. The following table shows the vibration-damping set to use depending on the barrier model.

| BARRIER HEIGHT | CODE    | MODEL                             | NUMBER OF DAMPERS |
|----------------|---------|-----------------------------------|-------------------|
| 150            | 1310973 | SAV 8E<br>(2 dampers for insert)  | 8                 |
| 250...1800     | 1310974 | SAV 12E<br>(2 dampers for insert) | 12                |

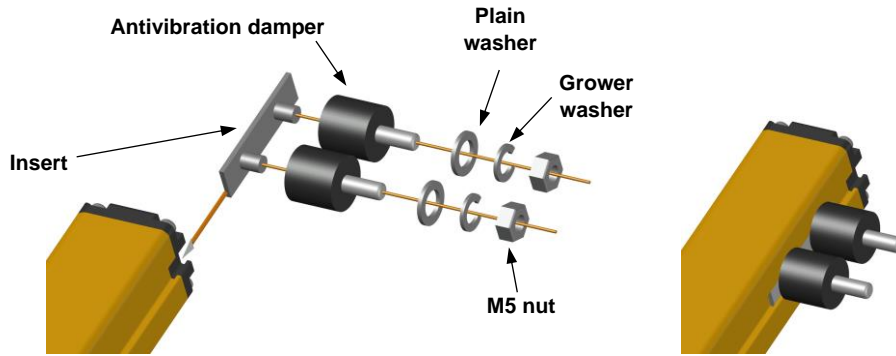


Figure 1

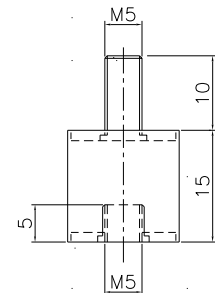
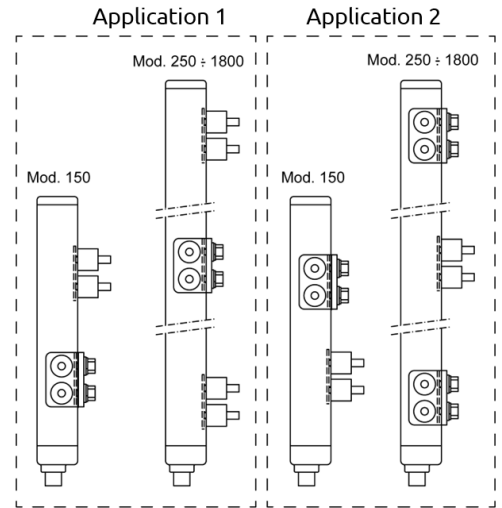
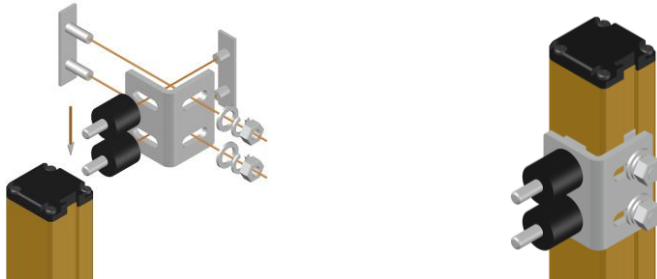


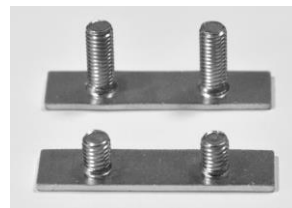
Figure 2 - Dimensions

**ASSEMBLY**

**SIDE ASSEMBLY WITH BRACKET**



**INSERTS**



12mm inserts  
(supplied with barrier)

4mm inserts  
(supplied with dampers)

**SOLUTION FOR TWO AXIS VIBRATION REDUCTION**

Example 1:



Example 2:

